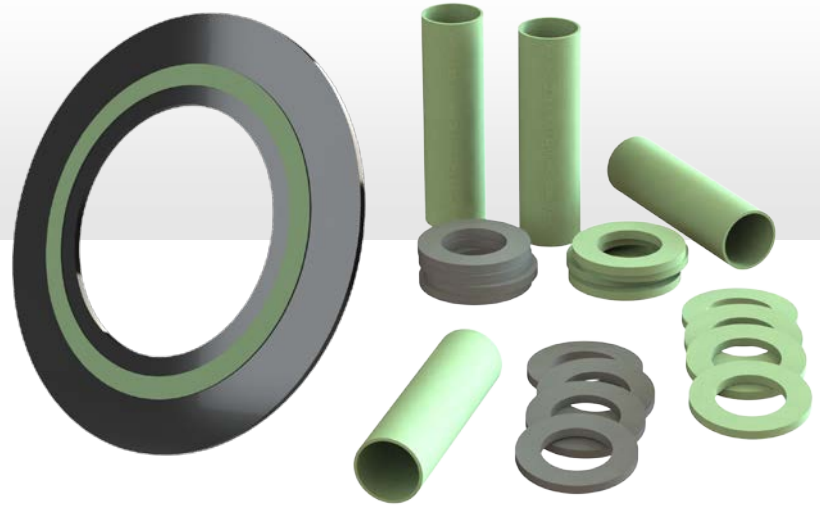


PRODUCT DATASHEET

ISOFLEX™-LT Isolation Kit

ISOFLEX™-LT is a flange isolation gasket made with NEMA grade glass-reinforced epoxy (GRE) and Corriculite®



FEATURES

- Wide sealing surface for performance in flanges with pitted or nicked surfaces
- Faced with Corriculite®, an inert, non-conductive material designed specifically to inhibit corrosion
- Seal design based on trusted Flexpro style serrations in the GRE base ring combined with Corriculite® facing to create a reliable, pressure-activated seal
- Designed for general use in Cathodic Protection systems in a wide variety of applications
- Inner diameter sized to match pipe bore

APPLICATIONS

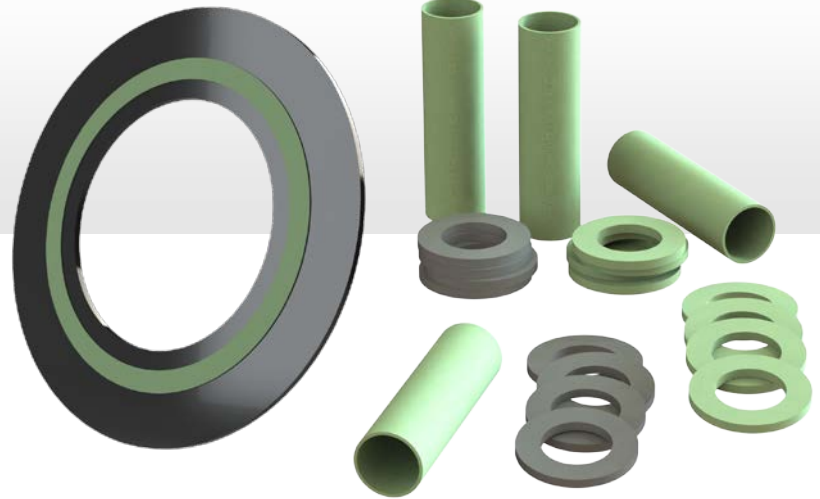
- Oil and Gas Cathodic Protection Systems
- Tank farms
- Compression and metering stations
- Pig launching skid
- Power plant inlet
- Gas conditioning and treatment plants
- General corrosion inhibition
- Off shore

The ISOFLEX™-LT provides reliable sealing and electrical isolation performance for Cathodic Protection systems across a wide range of applications. The wide facing is designed to seal even in the presence of small flange surface pits and nicks which are common in corrosive environments. The facing material, Corriculite®, utilizes a proprietary formulation that is chemically inert and non-conductive. Corriculite® ensures seals maintain integrity by preventing galvanic corrosion, extending equipment life and increasing operational productivity.

PRODUCT DATASHEET

ISOFLEX™-LT Isolation Kit

ISOFLEX™-LT is a flange isolation gasket made with NEMA grade glass-reinforced epoxy (GRE) and Corriculite®



Service:

Suitable for use in applications involving hot and cold water, steam, oils, fuels, gases and a wide range of general chemicals.

Gasket Factors:

M	2.0
Y	2500

Availability:

All ANSI, ASME B16.5, and AWWA sizes. Pressure class up to 900#. Base ring available in NEMA grade G10 and G11. Seals available in Corriculite®.

Thickness: 1/8"

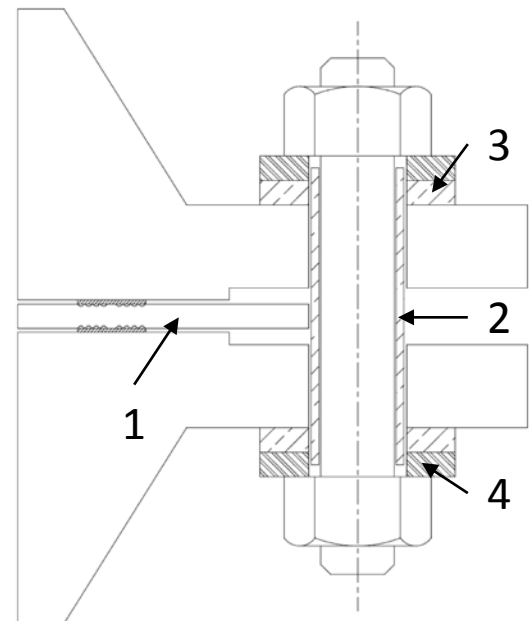
Color: Black and green

Isolation Kit Components:

- Isolation Gasket** – ISOFLEX™-LT isolation gasket. G10 or G11 base ring with Corriculite® facing material
- Isolation Sleeves** – Mylar, Nylon, Phenolic, PTFE, G10, or G11
- Isolation Washers** – Phenolic, G10, or G11
- Metallic Washers** – Zinc plated carbon steel

Recommended Temperature Range:

Base Ring Material	Minimum Temperature °F (°C)	Maximum Temperature °F (°C)
G10	-40 (-40)	302 (150)
G11	-40 (-40)	392 (200)



PRODUCT DATASHEET

Typical GRE Components Physical Properties:

Properties	Test Standard	Typical Value	Unit
Breakdown Voltage	ASTM D149	45	kV
Dielectric Strength	ASTM D149	550	V/mil
Impact Strength	ASTM D256	12	ft-lb/in
Flexural Strength	ASTM D790	55	ksi
Tensile Strength	ASTM D638	50	ksi
Compressive Strength	ASTM D695	50	ksi
Sheer Strength	ASTM D732	22	ksi
Water Absorption	ASTM D570	0.1	%

This data sheet refers to the material as supplied. The information contained herein is given in good faith, but no liability will be accepted by the Company in relation to same.

We reserve the right to change the details given on this data sheet as additional information is acquired. Customers requiring the latest version of this data sheet should contact our Applications Engineering Department.

The information given and, in particular, any parameters, should be used for guidance purposes only. The company does not give any warranty that the product will be suitable for the use intended by the customer.