

# Garlock Expansion Joint Style 204

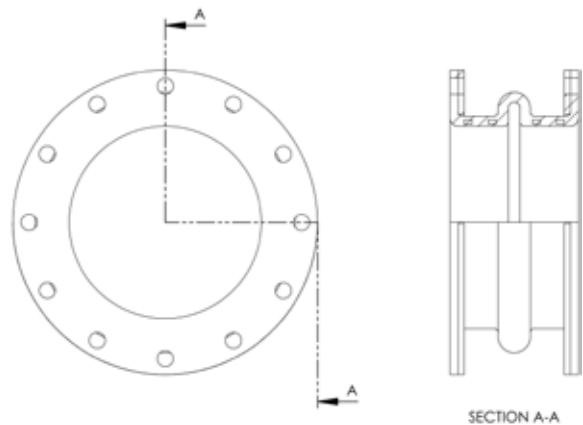
Style 204, considered an industry standard, is typically used for vacuum service. It is a fully customizable abrupt arched expansion joint for rigid piping systems.

## DESIGN

- » Tube
  - Wide selection of elastomers available which are resistant to temperatures, weathering, oxidation and chemicals
  - Abrupt arch configuration provides maximum movement, and pressure and vacuum resistance
- » Body
  - Composite fabric construction with welded, treated metal body rings for dimensional stability
- » Cover
  - Wide selection of elastomers available which are resistant to oxidation

## OPTIONAL CONFIGURATIONS

- » Multiple Arch- For higher movements
- » Filled Arch- To eliminate media buildup
- » Oversized Arch- For higher movements
- » Concentric and Eccentric Tapers- To connect piping of unequal diameter
- » Custom Drilling- ANSI, DIN, AWWA, BS, JIS, and special drilling patterns available on request
- » Extended Face-to-face
- » Offsets, lateral, angular, and torsional



## SPECIAL LINER AND COVER MATERIALS

- » CSM
- » Nitrile
- » Natural Rubber
- » Fluoroelastomer
- » EPDM
- » Neoprene
- » FDA materials available
- » Chlorobutyl

## TEMPERATURE

- » Chlorobutyl/Polyester w/Natural Gum +180°F (82°C)
- » Standard Chlorobutyl/Polyester +250°F (+120°C)
- » Chlorobutyl/Fiberglass/Kevlar with EPDM tube and cover +300°F (+150°C)
- » Fluoroelastomer w/Fiberglass/Kevlar +400°F (+205°C)

\*\* Kevlar is a registered trademark of DuPont,  
Hypalon is a registered trademark of DuPont Dow Elastomers

## CERTIFICATIONS & COMPLIANCES

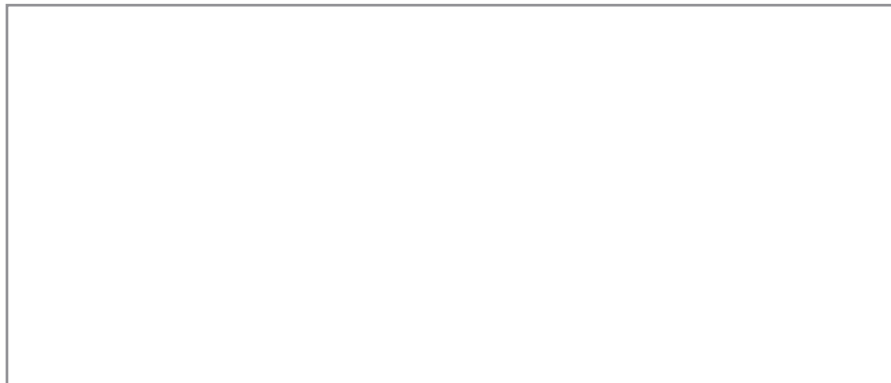
- » ASTM F1123 Compliance
- » Nuclear Safety Related product offering

## PRODUCT TABLE

Pipe Size I.D.		Movements					
		Compression		Lateral		Elongation	
inches	mm	inches	mm	inches	mm	inches	mm
1 - 1½	25 - 40	1/4	6	1/4	6	1/8	3
2 - 6	50 - 150	1/2	12	1/2	12	1/4	6
8 - 18	200 - 450	3/4	19	1/2	12	3/8	9
20 - 24	500 - 600	7/8	22	1/2	12	7/16	11
26 - 40	650 - 1000	1	25	1/2	12	1/2	12
42 - 120	1050 - 3000	1½	31	1/2	12	1/2	12

## PRESSURE TABLE

Pipe Size I.D.		Pressure		Vacuum	
		psi	bar	inch Hg	mm Hg
inches	mm				
½ - 4	13 - 100	165	11	29.9	750
5 - 12	125 - 300	140	10	29.9	750
14	350	85	6	29.9	750
16 - 24	400 - 600	65	4.5	29.9	750
26 - 66	650 - 1,650	55	3.8	29.9	750
68 - 96	1,700 - 2,400	45	3	29.9	750
98 - 108	2,450 - 2,700	40	2.8	29.9	750
110 - 120	2,750 - 3,000	30	2	29.9	750



EJ 9:28

### GARLOCK

an *EnPro* Industries family of companies  
Tel: 1-877-GARLOCK / 315.597.4811  
Fax: 800.543.0598 / 315.597.3216  
www.garlock.com

Garlock Sealing Technologies  
Garlock Rubber Technologies  
GPT  
Garlock PTY  
Garlock do Brasil

Garlock de Canada, LTD  
Garlock China  
Garlock Singapore  
Garlock Germany  
Garlock India Private Limited

Garlock de Mexico, S.A. De C.V.  
Garlock New Zealand  
Garlock Great Britain Limited  
Garlock Middle East